

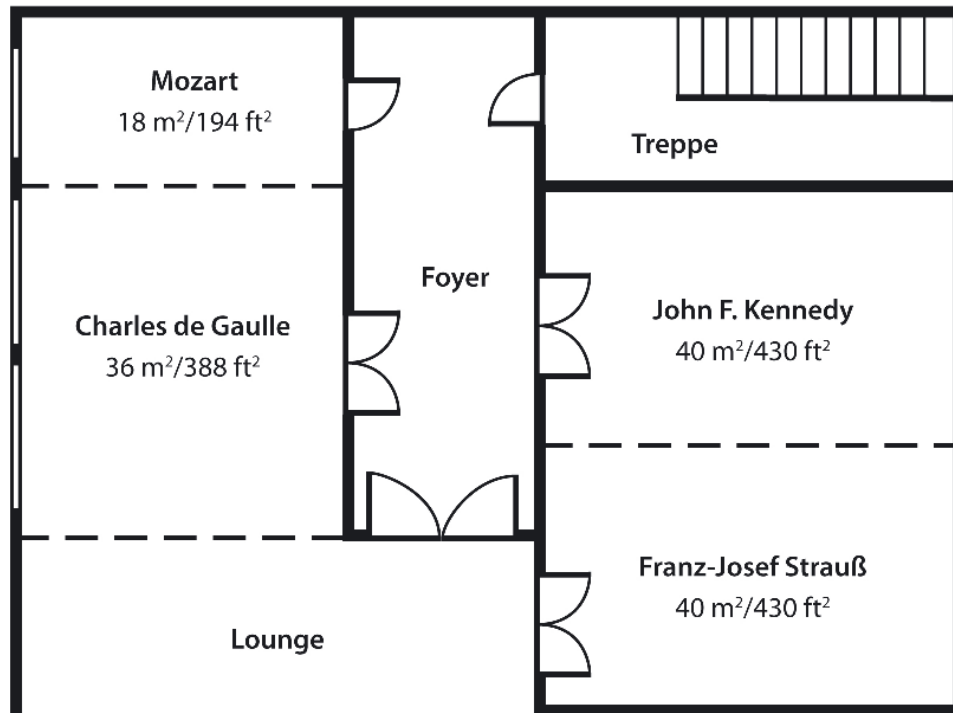
Holiday Inn Express München Flughafen

Freisinger Strasse 94
 84554 Schwaig / München
 Tel: 08122 / 9588 – 0
 Fax: 08122 / 9588 – 100
 Email: meetings-munich@fmhos.com











Our function rooms

Get down to business in one of our 4 naturally lit meeting rooms. All are fully equipped with wireless Internet and seat 4-60 people.



Layout & details

	 <i>ft²</i>	 <i>m</i>	 <i>m</i>	 <i>m</i>	 theatre	 classroom	 U-shape	 boardroom	Rent
Franz-Josef Strauß + John F. Kennedy	860	2,90	9,80	8,00	60	34	20		€ 300
John F. Kennedy	430	2,90	9,80	4,00	20			16	€ 190
Charles de Gaulle + Mozart	582	2,90	6,00	6,30	30	20	16	14	€ 200
Charles de Gaulle	388	2,90	6,00	6,30	20	14	12	14	€ 160
Mozart	194	2,90	6,00	2,30				6	€ 90

Holiday Inn Express München Flughafen

Freisinger Strasse 94

84554 Schwaig / München

Tel: 08122 / 9588 – 0

Fax: 08122 / 9588 – 100

Email: meetings-munich@fmhos.com



View of function room Franz-Josef Strauß + John F. Kennedy

Daily delegate rates - available from 10 participants

Smart 1 – Basic

€ 29,00 per person daily

- Welcome coffee break (buffet)
- Adequate function room with air-conditioning and daylight
- Standard technical equipment: Flipchart, projection screen, pin-board, speakers kit
- Light lunch consisting of grilled and cold sandwiches including 1 non-alcoholic beverage as well as coffee/tea (buffet)
- Unlimited mineral water during the meeting
- Unlimited coffee/tea and juices (buffet)
- External meeting participants park free of charge until 7pm

Smart 2 – a great package with a great price

€ 39,00 per person daily

- Welcome coffee break (buffet)
- Adequate function room with air-conditioning and daylight
- Standard technical equipment: Wireless Lan, Flipchart, projection screen, pin-board, speakers kit
- Light lunch consisting of salad buffet + 1 main course of your choice (+ vegetarian option), including 1 non-alcoholic beverage as well as coffee/tea (buffet)
- Afternoon coffee break with cake
- Unlimited mineral water during the meeting
- Unlimited coffee/tea and juices (buffet)
- External meeting participants park free of charge until 7pm

Holiday Inn Express München Flughafen

Freisinger Strasse 94

84554 Schwaig / München

Tel: 08122 / 9588 – 0

Fax: 08122 / 9588 – 100

Email: meetings-munich@fmhos.com



Smart 3 – all inclusive

€ 49,00 per person daily

- Welcome coffee break (buffet)
- Adequate function room with air-conditioning and daylight
- Standard technical equipment: LCD projector, projection screen, wireless Lan, Flipchart, projection screen, pin-board, speakers kit
- Light lunch consisting of soup + salad buffet + 1 main course of your choice (+ vegetarian option) + dessert, including 1 non-alcoholic beverage as well as coffee/tea (buffet)
- Morning coffee break with buttered Pretzles
- Afternoon coffee break with cake
- Unlimited sparkling apple and mineral water during the meeting
- Unlimited coffee/tea and juices (buffet)
- External meeting participants park free of charge until 7pm

Overview daily delegate rates SMART 1-3

	Smart 1 € 29	Smart 2 € 39	Smart 3 € 49
Adequate function room	x	x	x
Standard technical equipment	x	x	x
LCD Projector			x
Wireless Lan		x	x
Welcome coffee break (buffet)	x	x	x
Unlimited coffee/tea and juices (buffet)	x	x	x
Unlimited mineral water	x	x	
Unlimited sparkling apple and mineral water			x
Morning coffee break with buttered Pretzels			x
Lunch with grilled and cold sandwiches, incl. 1 beverage and coffee	x		
Lunch with salad buffet + 1 main course (see attachment), incl. 1 beverage and coffee		x	
Lunch with soup + salad buffet + 1 main course (see attachment) + dessert, incl. 1 beverage and coffee			x
Afternoon coffee break with cake		x	x
External meeting participants park free of charge until 7pm	x	x	x

Holiday Inn Express München Flughafen

Freisinger Strasse 94

84554 Schwaig / München

Tel: 08122 / 9588 – 0

Fax: 08122 / 9588 – 100

Email: meetings-munich@fmhos.com



Beverages

		<i>price per unit</i>
Coffee / tea in the meeting room (thermos)	2,0l	€ 6,00
Softdrinks (Pepsi Cola, 7up, Mirinda, sparkling apple)	0,2l	€ 2,70
Apple and Orange juice	0,2l	€ 2,70
Gerolsteiner sparkling mineral water	0,25l	€ 2,70
Gerolsteiner sparkling mineral water	0,75l	€ 5,50
Gerolsteiner still mineral water	0,25l	€ 2,70
Gerolsteiner still mineral water	0,75l	€ 5,50

Food

	<i>price per person</i>
Breakfast for external meeting participants	€ 7,90
Afternoon coffee break with cake	€ 3,50
Packages (must have been ordered)	
Light lunch mit grilled and coled sandwiches, incl. 1 beverage	€ 8,00
Salad buffet + various main courses (see attachment, min. 5 participants), incl. 1 beverage	€ 19,00
Entrees and pasta	
Side salad	€ 3,90
Tomato- or Goulash-Soup, served with bread	€ 5,90
Fettucine with tomato-, Bolognese- or Carbonara-Sauce	€ 8,90

Technical Equipment

	<i>price per day</i>
LCD projector	€ 50,00
Flipchart	€ 20,00
Pin-board	€ 20,00
Speakers kit	€ 20,00
Wireless-Lan, 24h (per laptop)	€ 6,00

Entertainment

If you are planning an evening outside of the hotel we gladly recommend the following restaurants for a group reunion:

- Weihenstephaner Bräustüberl in Freising – This restaurant is part of the worlds oldest brewery in Freising and recommendable for its rustic food and – of course- great beer <http://www.braeustueberl-weihenstephan.de>
- Erdinger Weissbräu: This restaurants is part of the most famous wheat-beer brewery in Germany and also serves traditional Bavarian fare. www.hotel-erdinger-weissbraeu.de

Our shuttle partner will gladly provide an offer for the transportation of your party.

Holiday Inn Express München Flughafen

Freisinger Strasse 94

84554 Schwaig / München

Tel: 08122 / 9588 – 0

Fax: 08122 / 9588 – 100

Email: meetings-munich@fmhos.com



How to get there - Holiday Inn Express Munich Airport



Hotel-Shuttle - Tel: 08122 / 9588-0

The recommended shuttle service will transport you comfortably within 5-10 minutes from the airport to the hotel. We are charging a modest fee of **€ 8,00 per room** (max. 2 adults and 2 children below 18 years of age). A taxi will charge app. €16,00. Shuttle service is available from **04:00 a.m. to 12:15 a.m.** (from 12:00 noon to 5 p.m. on request only). The shuttle commutes every 30 minutes between the hotel and the following stops at the airport:

- terminal 1 – C (arrivals)
- central area (MAC)– Stop 7
- terminal 2 – Stop 11

Car

Take highway A9 towards Nürnberg and turn off (app. 10 km after leaving Munich) onto motorway A92 towards Munich Airport. Take the airport exit and continue towards terminal 1. Take the left lane and follow the sign indicating "Erding / Schwaig". Turn right at exit "Schwaig" (app. 2km after leaving the airport) and turn right again onto Freisingerstrasse. Go straight at round-about. The hotel is located on the left.

Metro/S-Bahn

Take the S-Bahn S8 or S1 to the airport. Follow instructions for shuttle as described above.

Public bus

Public bus Nr.512 travels from the airport to the city of Erding. The airport bus stop is at the central area (Munich Airport Center). Get off in Schwaig opposite of the hotel. Make sure to check the schedule as the bus runs infrequently (www.mvv-muenchen.de).